

100/200/400/600A MEDIUM SPLIT CORE CURRENT TRANSFORMERS



Split-core current transformers provide linear output voltage that is directly proportional to the input current. These transformers are safely and easily installed over existing electrical power lines without disconnecting the lines or interrupting service.

DENT's energy monitoring components are used for a variety of applications including building automation, tenant submetering, performance verification, energy management, and new technology assessment.

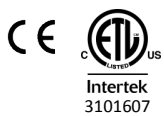


KEY SPECIFICATIONS	
Window Size	1.25" (3.20 cm)
Current Range	100A Model: 5 - 130A AC 200A Model: 4 - 260A AC 400A Model: 8—520A AC 600A Model: 12—780A AC
Output	333 mV at rated current
Ratio Error	<1% at rated current (typical)
Phase Error	<2° at rated current (typical)

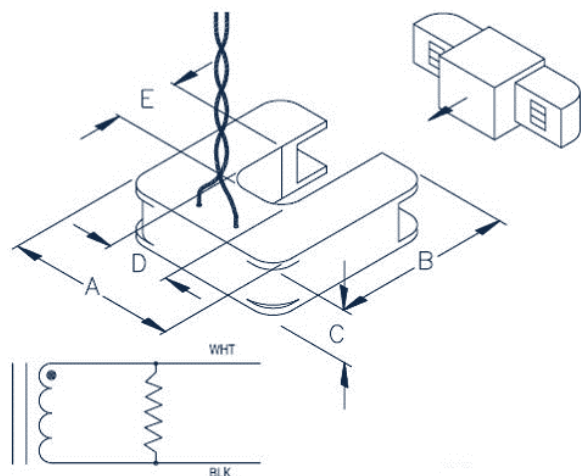
ELECTRICAL	
Output	333 mV at rated current
Wire Polarity	White = Hi, positive (+) Black = Low, negative (-)
Frequency Range	50 to 400 Hz

MECHANICAL	
Case Material	Epoxy encapsulated housing
Leads	2.7 M (8'), twisted pair, 20 AWG
Working Temperature	Maximum 105°C (220°F)

SAFETY	
Working Voltage	600 VAC, Category III
Dielectric Strength	5000 VAC around case 600V rated leads
Certification	Conforms to: UL STD 61010-1 EN 60044-1:1999 Certified to: CAN/CSA STD C22.2 No. 61010-1 2nd Ed.



DENT P/N	NOMINAL RATING (Amps)	USEFUL CURRENT RANGE (Amps)	DIMENSIONS				
			A	B	C	D	E
CT-SCM-0100	100	5 - 130A AC	8.26 cm (3.25")	8.51 cm (3.35")	2.54 cm (1.00")	3.18 cm (1.25")	3.18 cm (1.25")
CT-SCM-0200	200	4 - 260A AC					
CT-SCM-0400	400	8—520A AC					
CT-SCM-0600	600	12—780A AC					



CONTACT US

PART NUMBERS

DENT Instruments, Inc.
Energy & Power Measurement Solutions

925 SW EMKAY DRIVE
BEND, OREGON 97702 USA
541.388.4774 | 800.388.0770
WWW.DENTINSTRUMENTS.COM

- CT-SCM-0100-U/B 100A Medium Split Core
- CT-SCM-0200-U/B 200A Medium Split Core
- CT-SCM-0400-U/B 400A Medium Split Core
- CT-SCM-0600-U/B 600A Medium Split Core

All specifications contained in this document are subject to change without notice.
© DENT INSTRUMENTS, INC.
rev 062713